

# Newsletter

February 2026



YOUR PLACE  
YOUR CLUB

mtrsa.co.nz  
reception@mtrsa.co.nz  
07 575 4477

## Bingo



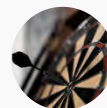
Every Friday from 1:00pm.  
Friendly faces, a bit of luck,  
and a whole lot of good  
times - All welcome.

## Karaoke



Every Thursday from  
7:00pm. Sing like nobody's  
listening (but we totally are  
— and we love it!

## Darts



Currently **ON HOLD** due to club  
renovations - We'll keep you  
updated.

## From the Manager's Desk

### Welcome to 2026 – A New Year for Our Club and Community

Welcome to 2026. I hope you managed to take a well-earned break and spend time some quality time with family and friends. The Club had a busy December—it was great to see members from further afield enjoying their holidays here with friends and family over the break and joining our regulars here at the Club.

That said, the tragic events at the Mount have rocked our community. As a designated emergency centre, we opened our doors to Civil Defence, the Council and emergency responders, and served as a station for some of those evacuated from the campsite. I wish to extend my thanks to those members present that morning who were understanding of the need to close the Club. Civil Defence and the Police asked me to extend their thanks to the staff and volunteers who provided food, drink and support to those who came through our doors. A special mention to Dave Corrin and Shelley Kerr who both opened up their homes to take in some of the evacuees and support them over the following days. We were inundated with offers of help ranging from home baking to clothes and bedding, Thank you to you all.

January is traditionally a quiet month and our raffle volunteers were given a well-deserved break. We have now resumed our usual Wednesday and Friday raffles, with membership draws, Joker's Wild and Spin the Wheel also back on Fridays. In response to member feedback, the Restaurant will be opening for longer hours with food available all day on weekends and public holidays, and later closing in the evenings as required.

There have been a few staff changes, with Damian, Malou and Katy moving on to fresh pastures—we wish them all the best. New staff members Lily and Ruby have been brought in to fill the gap so please give them a warm welcome.

There are two important Extraordinary General Meetings in February: On Sunday 15<sup>th</sup> for Tauranga RSA at Chadwick House; and on Sunday 22<sup>nd</sup> here at the Mount RSA. Attendees at these meetings will make the final decisions regarding the Clubs' merger and its future. If you are available, I encourage you to attend in order for you to have your say and use your vote.

Jonathan Clarke - General Manager

## Mt Music Club

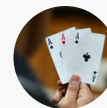
1st & 3rd Tuesday of the  
month at 10:15am. All  
welcome to join or watch.

## Mahjong



Every Monday in the west  
wing, 1 - 4pm. Contact  
Tania 027 220 1151

## Cards - 500



Every Tuesday at 12:45pm.  
Join our friendly group. Contact  
Jill 020 413 92497

## RSA Support Services Here When You Need Us



I hope everyone had an enjoyable and peaceful Christmas and New Year. We welcome 2026, full of things that have never been. **2026 Poppy Day- Friday 17th April** Planning is underway and anyone that can help with preparations or collecting, please get in touch

**Equipment Available for Members:** We have a range of mobility equipment available for members to borrow, including:

- Wheelchairs
- Walkers (indoor & outdoor)
- Mobility scooters
- Walking sticks
- Knee scooter

Members are welcome to borrow this equipment for as long as needed. Please get in touch if you or someone you know could benefit.

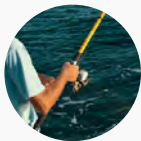
**Pyes Pa Cemetery Visit:** Last Tuesday of the month. The RSA Welfare van departs the RSA at 1.45 pm and we can pick up from Farm Street at Bayfair. To join the group on 24th February, please phone me to book a seat.

**Support Services Office Hours:** I am in the office Monday to Friday mornings. Please ring ahead to check I am available, as I may be out visiting.

If you need to meet outside these times, please call me to arrange an appointment—leave a message if I don't answer and I will get back to you.

**Shelley Kerr** 07 575 2385

## Fishing Club From the Boat to the Bulletin



We took a break over the Christmas holidays and left the fishing to the holiday visitors enjoying our little slice of paradise. We now have a great line-up of trips planned to begin in February, when we're hoping for calmer, more settled weather.

Our first trip will be to Tapu, followed by our annual Coromandel trip in early March, and then another Tapu trip later in March. That's the plan so far — here's hoping for calm seas and plenty of fat fish!

Cheers, Jeanette

## Country Music Dust Off Your Boots



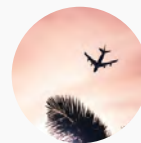
A great crowd turned out on Sunday 25th for our January Country Music concert and enjoyed an outstanding afternoon of entertainment. The show opened with local singers Hans, Heather, Jacqui, Gary, Josh Gray and Julz, who set a wonderful tone for the day.

Guest artist Dennis August then delivered a brilliant performance, showcasing why he is one of New Zealand's iconic country musicians, much to the delight of the audience. The second half featured lovely performances from Sally, Brian, Lutz, Bruce, Rererangi and Debz, along with a special instrumental from guest musician Robbie Laven, whose fiddle, flute, guitar and mandolin added something very special to the band.

Overall, it was a fantastic afternoon of country music, supported by our wonderful band.

**Please note, our February Country Music show scheduled for Sunday 22nd has been cancelled due to an RSA Extraordinary General Meeting at 4pm that day.**

## Travel Club Passport to Adventure

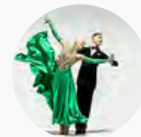


The Travel Club enjoyed a lovely Christmas dinner at the RSA in mid-December, marking our final get-together for the year. Since then, we have held a committee meeting to plan our first away trip for February, and we will be heading to the Cambridge area to kick off our travel programme for 2026.

Wishing you all a very Happy New Year — may it be filled with good times and interesting adventures ahead.

Jeanette

## Ballroom Dancing



Every Thursday 10am-12pm & Sunday from 4.00pm.  
(Excluding the last Sunday of every month)  
Call Liz **027 3403047** or Neill **020 4000157**

## Crafty Friends Group

Every Wednesday 10am - 12pm

Craft? Absolutely. Chat? Even more so! Join a lovely bunch who are just as handy with a glue gun as they are with a good gossip. Whether you're here to stitch, sketch, or just have a cuppa and a chinwag – everyone's welcome.



## Starting the Year Together – In Good Times and Tough Times.



We started the year off with a great New Years Eve party here at the Club, a party regarded by some as our best yet! Numerous Christmas functions were hosted through December for local businesses, and we greatly appreciate their support. We were also honoured to host a wedding over the festive season, and it was a truly wonderful occasion.

In January, we faced significant challenges due to the severe weather that impacted our region. On 22 January at 9:29am, devastating slips occurred at Mount Manganui (Mauao) as well as in Welcome Bay and Papamoa Hills, tragically resulting in the loss of several lives.

Civil Defence contacted the RSA and requested our support in making the Club available as an emergency response centre. We agreed without hesitation, and closed the Club in order for Civil Defence to set up station within. The RSA became a co-ordination hub where evacuees from affected areas were directed for assistance, with Police, Red Cross, and paramedics in attendance. Judy Hallinan and members of the Women's Section, along with Katrina and Linda, did a tremendous job serving tea, coffee and hot meals, as well as clothes, nappies, and the like, as much-needed support to those who had just experienced major trauma.

Jonathan capably co-ordinated operations on-site, including accommodation and whatever other assistance was needed. Kay and I personally welcomed a family from New Plymouth into our home, offering them an apartment for a few days after they were forced to evacuate their motorhome with little more than a handbag in hand. And our Support Officer, Shelley Kerr, took in a young international visitor affected by the Mount Maunganui slip—he is still there.

On Saturday, 25 January, I attended the funeral of the son & grandmother of Keith Richardson, who tragically lost their lives in the Welcome Bay landslide. Keith's parents, Trevor and Maxine Richardson, are members of the Mount RSA and our deepest condolences go out to them and their family during this incredibly sad time.

Dave Corin - Mt RSA President.

## Extraordinary General Meetings

What you need to know....



The **Tauranga RSA** has called an Extraordinary General Meeting (EGM) to be held on **Sunday, 15<sup>th</sup> February 2026 at 1:00pm**. The purpose of this meeting is to discuss the proposed merger with the Mount Maunganui RSA. The agenda will include:

1. Update on the outcome of the proposed amalgamation between Tauranga RSA and Mount Maunganui RSA.
2. An update on the Tauranga RSA Support Trust acquisition and direction.

Following this, the **Mount Maunganui RSA** will hold its own EGM on **Sunday, 22<sup>nd</sup> February 2026 at 4:00pm**, to discuss the outcome of the Tauranga RSA EGM. Please see below (right) for the agenda.

We are hopeful that this EGM will provide a clear pathway forward for the merger plans, including confirmation of the proposed \$2 million in funding to support Mount Maunganui RSA.

Our Executive Committee HAS been working tirelessly—and with very limited funds—to take the Club through to the merger. We look forward to our loans being repaid in full to the Welfare and Village Trusts, and to securing sufficient working capital to take the combined Tauranga and Mount Maunganui RSA in a strong and exciting direction for the future.

### EGM NOTICES:



**TAURANGA RETURNED AND SERVICES ASSOCIATION (INC)**  
**NOTICE OF EXTRAORDINARY GENERAL MEETING**  
To be held at  
**CHADWICK HOUSE**  
**250 CHADWICK ROAD**  
on **Sunday 15th February 2026**  
At 1.00pm

If a Quorum is not present, the meeting will be adjourned until 1.00pm On Sunday 22nd February 2026

**Business**

- 1.0 Update on the outcome of the proposed amalgamation between the Mount Maunganui RSA and the Tauranga RSA.
- 2.0 Update on the Tauranga RSA Support Trust acquisition and direction.

Please present your membership card for registration

*Sue Martin, Tauranga RSA Manager*



**MOUNT MAUNGANUI RETURNED & SERVICES ASSOCIATION (INC)**  
**NOTICE OF EXTRAORDINARY GENERAL MEETING (EGM)**

Notice is hereby given that an Extraordinary General Meeting (EGM) of the Mt Maunganui RSA will be held on:

**Date:** Sunday, 22nd February 2026  
**Time:** 4:00 PM  
**Venue:** Mt Maunganui RSA Clubrooms

**Purpose of the Meeting:**  
The purpose of this meeting is to:

1. Update on the merger process between Tauranga and Mount Maunganui RSA's following the EGM held by Tauranga RSA on 15th February 2026, and make decisions on the future direction of the RSA.
2. Set membership fees for 2026/2027
3. Approve recommended edits to the constitution.

**All members are encouraged to attend.**  
Your input and votes are vital to the future direction of the club.  
To vote, your membership must be current.

## Snooker Club Straight Shots & Side Spin



### Recent club day winners:

**Mondays:** Murray Hall & Dennis Bidois, Wayne Tarrant & Red Blake, Alex Stevenson & Dave Carter

**Wednesdays:** Dennis Bidois, Mark Crosby.

**Thursdays:** Craig Rollinson, Gary Neels.

### High Breaks for: Dec / Jan:

**A Grade:** Lawrence Millington (97)

**B Grade:** Kelvin Pilkinton (31), Gary Coston (42)

**C Grade:** Cheryl Pilkinton (12)

**Billiards:** Lawrence Millington (75)

## Punters Club Bets, Beers & Bragging Rights



The Punters Club continues to be a fun and sociable way for members to come together, enjoy a bit of friendly competition, and share in the excitement of the races. Whether you're an experienced punter or just in it for the company, everyone is welcome. We look forward to another great year of good laughs, good company, and hopefully a few winning tickets along the way!

## Sports Club Raffle Roster - February 2026

7 February 2026	<b>8-Ball Club</b>
21 February 2026	<b>8-Ball Club</b>
28 February 2026	<b>8-Ball Club</b>
7 March 2026	<b>8-Ball Club</b>

**Note:** These Saturdays may be shifted to Sundays - at the adjunct's discretion.

## Chess Club Moves & Masterminds



The Chess Club is in full swing, with players working toward securing a place in our preliminaries later in the year. Our early programme is progressing well as new players learn the basics and continue to improve their game.

Caleb, Chess Club

## Walking Club Miles & Moments



We meet at the RSA on Tuesdays and Thursdays, departing for a one-hour walk at 9:30am. Our walk usually takes us down to the beach, and we often stop for a coffee along the way.

If you're looking for some gentle exercise and friendly company, we'd love you to join us.

Sue Neill

## Golf



### GOLF TOURNAMENTS 2026

The Golf Section has been busy, with a number of tournaments lined up for 2026. This year we will be playing at The Mount and Omokoroa. We are currently finalising dates, and a full schedule will be published shortly.

Open to all RSA members. We welcome all golfers from RSA Clubs across the Bay region to join us for our tournaments. It's only **\$5 to join** our section. We run friendly and fun tournaments, and the \$50 entry fee includes 3 tickets for meat pack raffles.

**2 men's divisions & 2 women's divisions**  
**Best Stableford**  
**Generous prize table**

For further information email: [mtrsagolf@gmail.com](mailto:mtrsagolf@gmail.com)

## Line Dancing Boots, Scoots & Good Times



### Recommences: Saturday 7th February 2026

Classes will continue every Saturday thereafter, unless advised.

### Class Times (Saturday mornings):

Upper Beginners: 10:30am – 11:30am

Improvers: 11:30am – 12:30pm

Free Dancing: until 1:00pm

**Cost:** \$5 per class | **Tutor:** Damian Sutton

**Contact:** wakaboi23@hotmail.com | 021 781 398

## Women's Section



I sincerely trust that everyone had an enjoyable Festive season. After a busy year, especially towards the end of 2025, the committee have been able to recharge their batteries for 2026.

Our first Social Day will be Wednesday, February 25th starting at 1.30pm and we will be entertained by the popular "Red Fox Duo".

We are looking forward to welcoming you back for an afternoon of friendship, great entertainment & a lovely afternoon tea -Till then, take care.

Judy Hallinan (President)

## Indoor Bowls Rolling Right Along



We started our 2026 season on Monday, 2nd February, beginning at 12:30 pm.

Anyone interested in trying Indoor Bowls is very welcome to join us and give it a go — even if you have never held a bowl before. We are a friendly, social group who enjoy plenty of fun and laughter along the way.

Joy B (Secretary)

## Renew Your Membership



Renew your subs from **01 January 2026 - 30<sup>th</sup> June 2026** for just **\$20.00**. After that, the new membership year will be 1<sup>st</sup> July 2026 – 30<sup>th</sup> June 2027.

If you'd like to pay online, please use your membership number as reference.

### Our bank details are:

Mount Maunganui Returned Services Association (Inc)  
02-0372-0016660-00

If you are a **Life Member** or over **90**, your membership is free: Please pop into the office or call to get your sub renewed for **free**.

## Last Post



We farewell with honour the following members who have recently passed. Our thoughts are with their families, friends, and fellow members as we remember their contributions and companionship within our RSA community.

Gladys Hjorth  
Rex Farrow  
Beverly Crombie  
Barry Snow  
Keith Stollery  
Judith Galloway

**Associate  
675695  
Associate  
Associate  
32133  
Women's  
Section**





## FIND YOUR CREW – REACH OUT TODAY

8 Ball (Pool)	Frans Schaeffers	07 262 0156	fransschaeffers@outlook.com
Chess Club	Caleb Wright	027 339 3151	first25plus5@gmail.com
Fishing Club	Jeanette Adamson	07 575 3724	jeanette.adamson@hotmail.co.nz
Golf Club	Wayne Ashworth	021 369 540	wayne@glengyle.co.nz
Indoor bowls	Jill Ovenstone	020 413 92497	jill.n.ovenstone@gmail.com
Punters Club	Robyn Levers	027 444 8623	karisma.beauty.nails@gmail.com
Snooker	Heather Chesters	027 254 6775	hchesters17@outlook.com
Travel Club	Janice Craig	021 1789312	ji_craig12@hotmail.co.nz
Walking Club	Sue Neill	0211 859 755	sueneillnz@gmail.com
Line Dancing	Damian Sutton	021 781 398	wakaboi23@hotmail.com
Ballroom Dancing	Liz Mason	027 340 3047	lizandmurray@gmail.com
Karaoke	Robyn Levers	027 444 8623	karisma.beauty.nails@gmail.com
Cards (500)	Jill Ovenstone	020 413 92497	jill.n.ovenstone@gmail.com
Mahjong	Tania Wilson	027 220 1151	dwjwtilson@yahoo.com
Bingo	Diane King	027 552 2722	arthurking@xtra.co.nz
Bolivia	Sue Baeurle	027 342 4476	baeurle@xtra.co.nz
Crafty Friends	Margaret Butler	022 043 7978	margzhome@gmail.com
Darts	Kevin Boys	027 22 46 790	fernzretreat@xtra.co.nz
Womens Section	Judy Hallinan	027 605 1333	judyhallinan07@gmail.com
Courtesy Bus	Driver Number	027 477 6178	Wednesday & Friday
Karaoke	Robyn Levers	027 444 8623	karisma.beauty.nails@gmail.com

### ADJUNCT GATHERINGS & CLUB HAPPENINGS

Our various adjunct groups meet regularly—whether it's darts, snooker, fishing, or social catch ups, there's something for everyone. Be sure to check the club noticeboard or chat with our team to find out when your group is next getting together.

Keep an eye out for our monthly newsletter, packed with details on upcoming events, live entertainment, raffles, and special shows—so you never miss out on what's happening at the Mount RSA.

**[www.mtrsa.co.nz](http://www.mtrsa.co.nz)**

UPCOMING

# Entertainment



**VALENTINE'S DAY  
BOOGIE NIGHT DANCE PARTY**

LOVE IS IN THE AIR... AND SO IS THE MUSIC!

GET READY FOR A FEEL-GOOD DANCE PARTY PACKED WITH THE BEST TUNES ACROSS THE DECADES.

POP • SOUL • R&B • MOTOWN • REGGAE • DISCO • SOFT ROCK  
PLUS SLOW, ROMANTIC NUMBERS TO KEEP THE LOVE FLOWING

**JOIN THE PARTY  
SATURDAY 14<sup>TH</sup> FEBRUARY  
FROM 6:30PM**

A Valentine's Menu to Fall in Love With  
Treat your special someone to a romantic Valentine's menu, designed to be shared, savoured and enjoyed before hitting the dancefloor.

Love is in the Air... and in Your Glass  
Sip on specially crafted Valentine's cocktails, perfectly mixed for romance — sweet, smooth and a little bit cheeky.

**RSA**

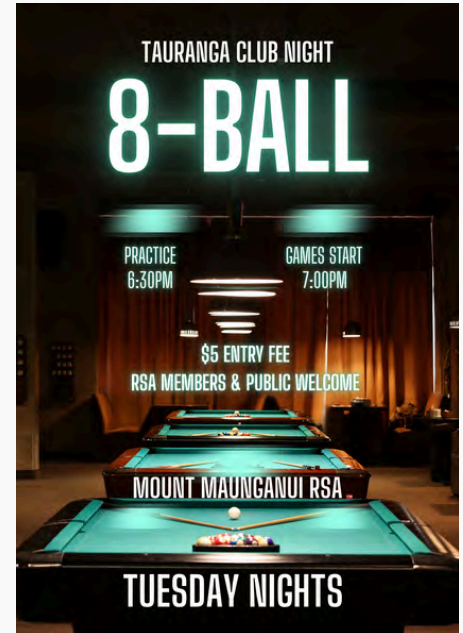


**MEMBERSHIP  
ATTENDANCE DRAW  
EVERY FRIDAY**

**\$250**

DRAWN ANYTIME  
BETWEEN  
5PM - 7PM

**YOU MUST BE HERE TO WIN!**



**TAURANGA CLUB NIGHT**

**8-BALL**

PRACTICE 6:30PM GAMES START 7:00PM

**\$5 ENTRY FEE**  
RSA MEMBERS & PUBLIC WELCOME

**MOUNT MAUNGANUI RSA**

**TUESDAY NIGHTS**



**MEAT RAFFLES  
WEDNESDAY & FRIDAY**

**TICKET**

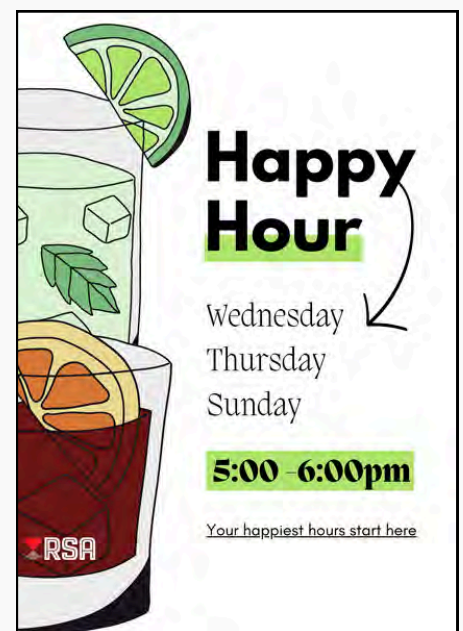
A SELECTION OF MEAT TRAYS TO BE WON  
EVERY WEDNESDAY & FRIDAY  
FROM 4:00PM



**JOKERS WILD  
WEDNESDAY & FRIDAY**

**\$1,000 CASH**

**\$2 PER TICKET - MEMBERS ONLY**



**Happy Hour**

Wednesday  
Thursday  
Sunday

**5:00 - 6:00pm**

**RSA**

Your happiest hours start here

## COURTESY BUS

Our courtesy bus operates **Wednesdays** and **Fridays** from **3:00pm onwards**, departing the Mt RSA on the hour. Pick-ups and drop-offs are available—please **call 0274 776 178** to arrange your ride.

## Donation Requested

Mount & Omanu to Girven Road

**\$4 per person**

Girven Road to Domain Road, Papamoa

**\$6 per person**

Domain Road to the end of Papamoa

**\$8 per person**

MONDAY

TUESDAY

WEDNESDAY

THURSDAY

FRIDAY

SATURDAY

SUNDAY

February

2026

		<div>4</div> <div>Crafty Friends 10.00am - 12noon</div> <div>Raffles 4-6.30pm</div> <div>Happy Hour 5-6pm</div> <div>Jokers Wild 6.15pm</div> <div>Snooker 6.15pm</div> <div>8 Ball 7.00pm</div>	<div>5</div> <div>Walking Club 9.30am</div> <div>Ballroom Dancing 10.00-12noon</div> <div>Exercise Group 10.00-11.00am</div> <div>Bolivia 12.30-3.30</div> <div>Snooker 12.30pm</div> <div>Happy Hour 5-6pm</div> <div>Karaoke 6.30pm-9.30pm</div>	<div>6</div> <div>WAITANGI DAY OPEN</div> <div>Bingo 1pm</div> <div>Raffles 4.00pm</div> <div>Jokers Wild 6.15pm</div> <div>Spin the Wheel to win \$500 After raffles</div> <div>Membership Attendance Draw</div> <div>Woody Dean</div>	<div>7</div> <div>Line Dancing 10.30am-1.00pm</div>	<div>8</div> <div>Ballroom Dancing From 4.00pm</div> <div>Happy Hour 5-6pm</div>
<div>9</div> <div>Indoor Bowls 12.15 - 1.15pm</div> <div>Snooker 12.30pm</div> <div>Mahjong 1.00 - 4.00pm</div> <div>Chess 6:15pm</div>	<div>10</div> <div>Walking Club 9.30am</div> <div>Exercise Group 10.00 - 11.00am</div> <div>OMG Music Group 10.30am</div> <div>Cards - 500 12.45pm</div> <div>Tauranga 8-Ball 6.00pm</div>	<div>11</div> <div>Crafty Friends 10.00am - 12noon</div> <div>Raffles 4.00 - 6.30pm</div> <div>Happy Hour 5-6pm</div> <div>Jokers Wild 6.15pm</div> <div>Snooker 6.15pm</div> <div>8 Ball 7.00pm</div>	<div>12</div> <div>Walking Club 9.30am</div> <div>Exercise Group 10.00 - 11.00am</div> <div>Ballroom Dancing 10am</div> <div>Bolivia 12.30pm</div> <div>Snooker 12.30pm</div> <div>Happy Hour 5-6pm</div> <div>Karaoke 6.30pm-9.30pm</div>	<div>13</div> <div>Ukezplus 10.15am - 12.00pm</div> <div>Bingo 1pm</div> <div>Mahjong 1-4pm</div> <div>Raffles 4.00pm</div> <div>Spin the Wheel to win \$500 After raffles</div> <div>Jokers Wild 6.15pm</div> <div>Membership Attendance Draw</div> <div>Gerry Lee</div>	<div>14</div> <div>Line Dancing 10.30am-1.00pm</div> <div>Valentine's Day Boogie Night Dance Party 6pm</div>	<div>15</div> <div>Tauranga RSA EGM 1.00pm Chadwick House</div> <div>Ballroom Dancing From 4:00pm</div> <div>Happy Hour 5-6pm</div>
<div>16</div> <div>Indoor Bowls 12.15 - 1.15pm</div> <div>Snooker 12.30pm</div> <div>Mahjong 1.00 - 4.00pm</div> <div>Chess 6.15pm</div>	<div>17</div> <div>Walking Club 9.30am</div> <div>Exercise Group 10.00 - 11.00am</div> <div>Mt Music Group 10.00 - 12.00pm</div> <div>Cards - 500 12.45pm</div> <div>Tauranga 8-Ball 6.00pm</div>	<div>18</div> <div>Crafty Friends 10.00am - 12noon</div> <div>Raffles 4-6.30pm</div> <div>Happy Hour 5-6pm</div> <div>Jokers Wild 6.15pm</div> <div>Snooker 6.15pm</div> <div>8 Ball 7.00pm</div>	<div>19</div> <div>Walking Club 9.30am</div> <div>Ballroom Dancing 10am</div> <div>Exercise Group 10.00 - 11.00am</div> <div>Bolivia 12.30pm</div> <div>Snooker 12.30pm</div> <div>Happy Hour 5-6pm</div> <div>Karaoke 6.30pm-9.30pm</div>	<div>20</div> <div>Ukelele Workshop 10.15am - 12noon</div> <div>Bingo 1pm</div> <div>Mahjong 1-4pm</div> <div>Raffles 4.00pm</div> <div>Spin the Wheel to win \$500 After raffles</div> <div>Jokers Wild 6.15pm</div> <div>Membership Attendance Draw</div> <div>Terry Jensen</div>	<div>21</div> <div>Line Dancing 10.30am-1.00pm</div>	<div>22</div> <div>EGM 4.00pm</div> <div>Happy Hour 5-6pm</div>
<div>23</div> <div>Indoor Bowls 12.15 - 1.15pm</div> <div>Snooker 12.30pm</div> <div>Mahjong 1.00 - 4.00pm</div> <div>Chess 6.15pm</div>	<div>24</div> <div>Walking Club 9.30am</div> <div>Exercise Group 10.00-11.00am</div> <div>OMG Music Group 10.30am</div> <div>Cards - 500 12.45pm</div> <div>Mahjong 1.00pm</div> <div>Bus to Pyes Pa Cemetery 1.45pm</div> <div>Tauranga 8-Ball 6:00pm</div>	<div>25</div> <div>Women's Section Social Day 1.30pm</div> <div>Crafty Friends 10.00am - 12noon</div> <div>Raffles 4-6.30pm</div> <div>Happy Hour 5-6pm</div> <div>Jokers Wild 6.15pm</div> <div>Snooker 6.15pm</div> <div>8 Ball 7.00pm</div>	<div>26</div> <div>Walking Club 9.30am</div> <div>Ballroom Dancing 10am</div> <div>Exercise Group 10.00 - 11.00am</div> <div>Bolivia 12.30pm</div> <div>Snooker 12.30pm</div> <div>Happy Hour 5-6pm</div> <div>Karaoke 6.30pm-9.30pm</div>	<div>27</div> <div>Ukezpluz 10.15am - 12noon</div> <div>Bingo 1pm</div> <div>Mahjong 1-4pm</div> <div>Raffles 4-6.30pm</div> <div>Spin the Wheel to win \$500 After raffles</div> <div>Jokers Wild 6.15pm</div> <div>Membership Attendance Draw</div> <div>Shy &amp; Retiring</div>	<div>28</div> <div>Line Dancing 10.30am-1.00pm</div>	